

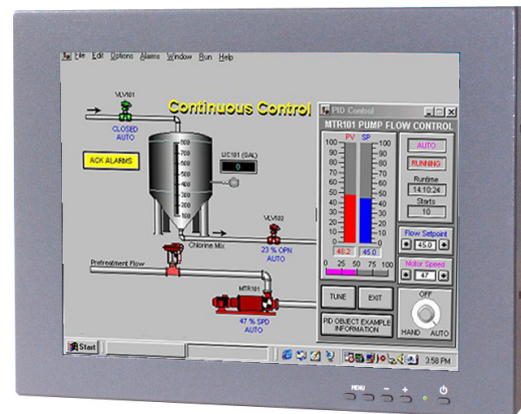
HIGH QUALITY, LCD MONITOR HEAD

The 29LM15161PY Series of LCD monitor heads has been designed for industrial applications that require a compact VGA/XGA compatible monitor with good viewability. It is constructed from painted Aluminium, making it lightweight with good rigidity. VESA fixings at the rear make for easy wall mounting or use with Ergo arms. Side and/or Top fixing brackets are also available.

Power & Signal connectors exit vertically downwards allowing the installer to take full advantage of the monitor's 65 mm depth. The 61MY series has been designed as a cost-effective alternative to our 51UN series 15.0" display that is designed specifically for Legacy Signals up to XGA resolution.

SOLUTIONS FOR MONITOR HEADS

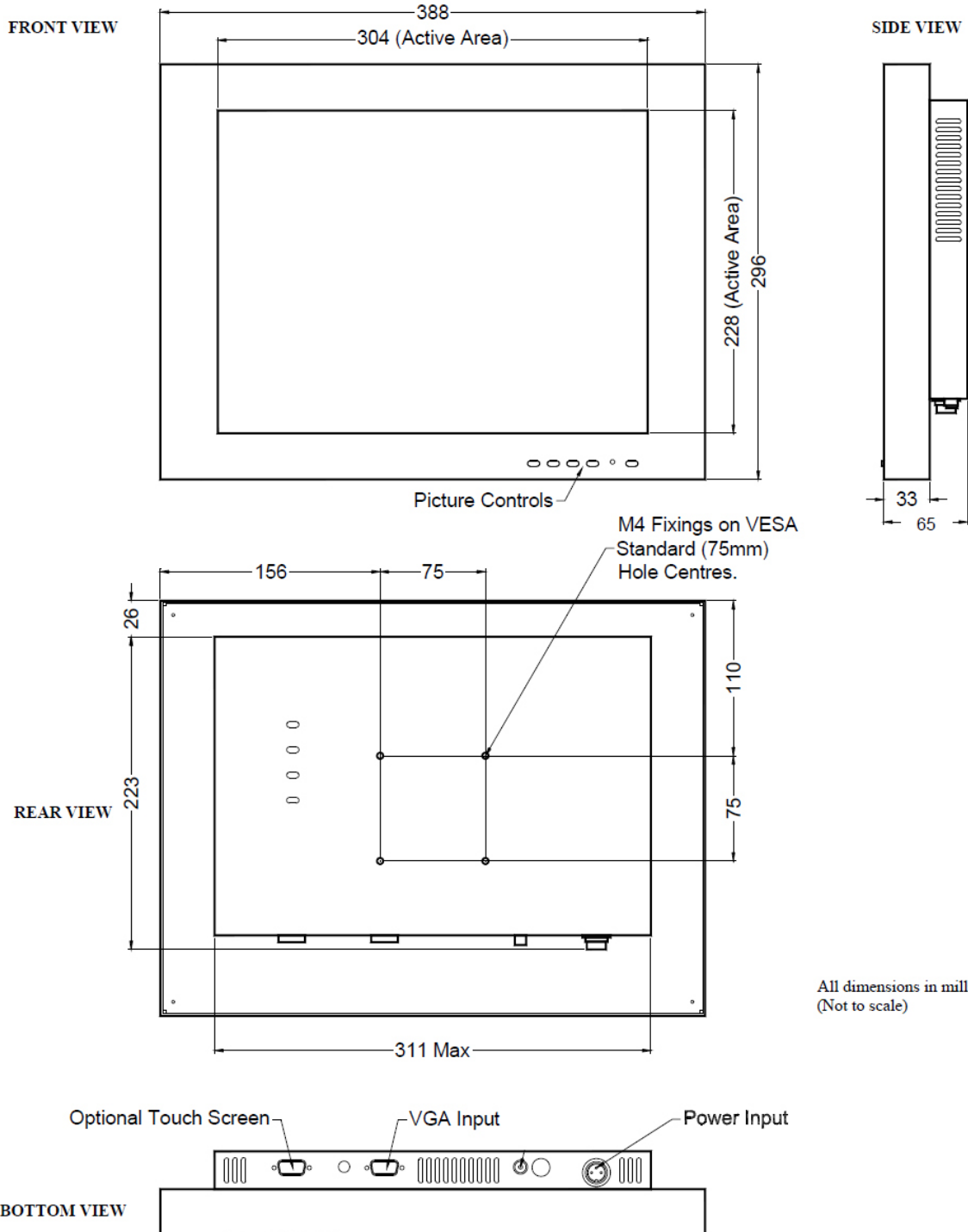
- > **Vesa standard fixings for ergo arm**
VESA fixings at the rear making it easy for wall mounting or use with ergo arms.
- > **Optional touch screen facility**
A touch screen can be integrated into the monitor
- > **Inputs**
All monitors have RCA connectors
- > **Rugged metal construction with good stability**
The LCD monitor has been designed with solidity, being housed in a compact metal construction with a toughened glass protection screen.



15.0" LCD HEAD MONITOR

29LM151E61PY

DATASHEET



KENT MODULAR ELECTRONICS LTD
621 Maidstone Road
Rochester, Kent ME1 3QJ
T: +44 (0)1634 830123 F: +44 (0)1634 830619
E: sales@kme.co.uk W: www.kme.co.uk

