

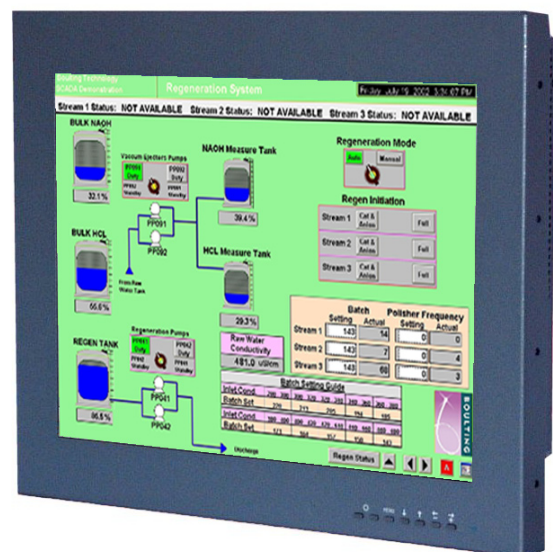
## HIGH QUALITY, LCD MULTISCAN MONITOR HEAD

KME has developed this 19.0" Head model, within the popular 29LM series of LCD monitors, to address the growing demand for a monitor that is capable of displaying high quality PAL/NTSC video and VGA to SXGA data signals.

The 29LM1901E31MPY/1 series has two separate signal sources which can be connected simultaneously and automatically switched on a Priority basis. Alternatively the video images may be presented as a "Picture in Picture" over a data image. This selection is set-up by the sophisticated OSD controls that also enable picture zoom, flip, rotate and freeze frame features. Remote access to the OSD controls is also available via the RS232 serial port.

### SOLUTIONS FOR MONITOR HEADS

- > **Vesa standard fixings for ergo arm**  
VESA fixings at the rear making it easy for wall mounting or use with ergo arms.
- > **Optional touch screen and RS232 facility**  
A touch screen or RS232 can be integrated into the monitor
- > **Inputs**  
All monitors have DVI -D, 15-D and RCA connectors
- > **Rugged metal construction with good stability**  
The LCD monitor has been designed with solidity, being housed in a compact metal construction with a toughened glass protection screen.



# 19.0" LCD HEAD MONITOR

29LM1901E31MPY/1

# DATASHEET

Electrical Description		Mechanical Description	
<b>TFT Characteristics:</b>	Type:	a-si TFT active matrix	<b>Input:</b>
	Max Resolution:	1280 x 1024 pixels	<b>Housing</b>
	Active Display Area:	376 x 301mm	<b>User Controls:</b>
	Response Time:	20ms average, typical	<b>On Screen buttons</b>
	Contrast Ratio:	1000:1 typical @ CR≥10	
	Brightness:	250cd/m <sup>2</sup> typical	
	Viewing Angles (at CR>10):	178 ° / 178 °	
	Backlight Life:	50,000 hours typical	
	No. Colours:	16.7 Million	
	<b>Video Signal:</b>	Analog 0.7Vp-p PAL / NTSC	
<b>Signal Sync:</b>	Separate H&V (+/-ve) TTL Composite (CVBS) 1V p-p		
<b>Synchronisation Range:</b>			
Horizontal scan:	15kHz (PAL/NTSC) 30 - 50 kHz		
Vertical scan:	56-85Hz		
<b>Display modes:</b>			
VESA Support:	640 x 480 VGA 800 X 600 SVGA 1024 x 768 XGA 1280 x 1024 SXGA (recommended)		
<b>Clock rate:</b>	135MHz max		
<b>Power Supply:</b>	12V dc		
<b>Power Consumption:</b>	60W (Max)		
<b>Environmental:</b>			<b>Part Numbers:</b>
Storage Temp:	-20 to 65°C		Desktop model:
Operating Temp:	0 to 50°C		AC power pack:
			Resistive touch screen via RS232: (or USB option)
			29LM1901E31MPY/1
			20BK0220
			29LM1901ER31MPY/1

Due to a policy of continuous product development KME reserves the right to change specifications and descriptions without prior notification. All trademarks acknowledged.

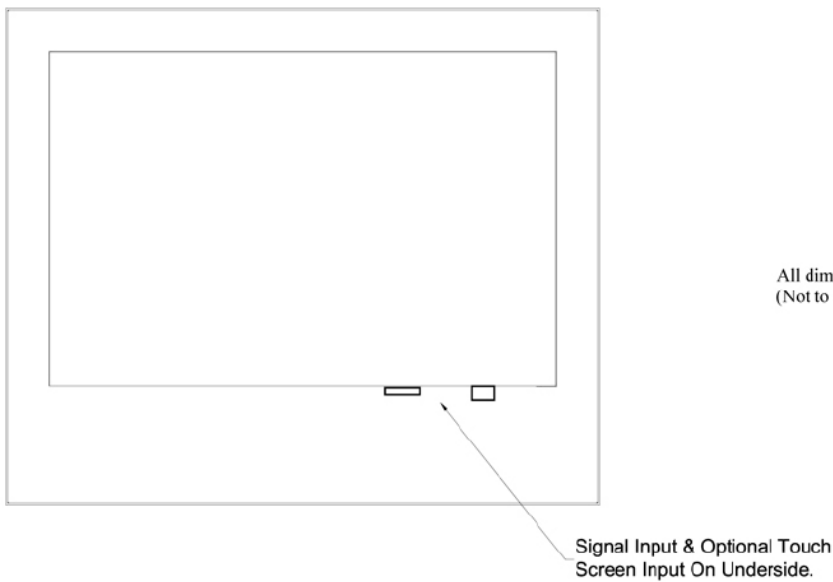
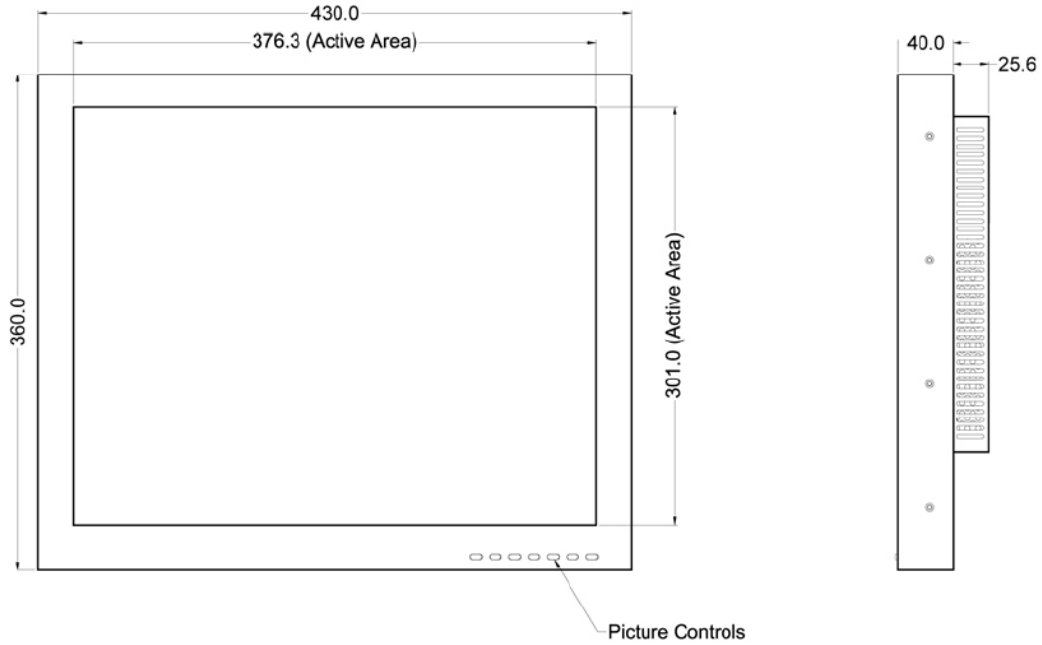
KENT MODULAR ELECTRONICS LTD  
 621 Maidstone Road  
 Rochester, Kent ME1 3QJ  
 T: +44 (0)1634 830123 F: +44 (0)1634 830619  
 E: sales@kme.co.uk W: www.kme.co.uk



# 19.0" LCD HEAD MONITOR

29LM1901E31MPY/1

# DATASHEET



All dimensions in millimetres  
(Not to scale)