

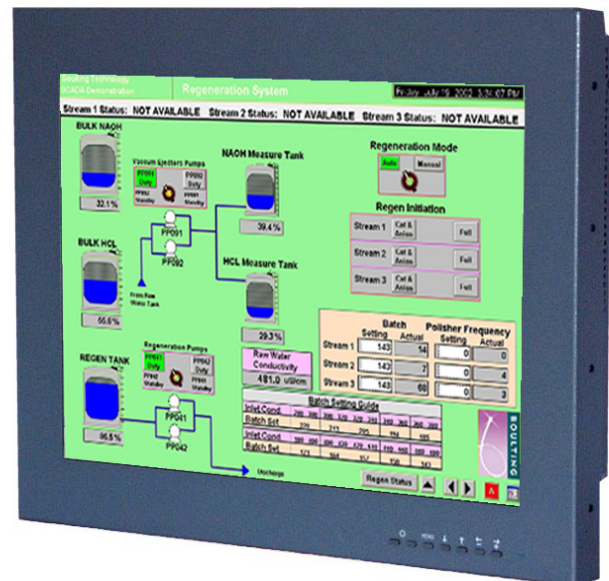
HIGH QUALITY, LCD MULTISCAN MONITOR HEAD

KME has developed this 21.3" Head model, within the popular 29LM series of LCD monitors, to address the growing demand for a monitor that is capable of displaying high quality PAL/NTSC video and VGA to UXGA data signals.

The 29LM211A31MPY series has two separate signal sources which can be connected simultaneously and automatically switched on a Priority basis. Alternatively the video images may be presented as a "Picture in Picture" over a data image. This selection is set-up by the sophisticated OSD controls that also enable picture zoom, flip, rotate and freeze frame features. Remote access to the OSD controls is also available via the RS232 serial port.

SOLUTIONS FOR MONITOR HEADS

- > **Vesa standard fixings for ergo arm**
VESA fixings at the rear making it easy for wall mounting or use with ergo arms.
- > **Optional touch screen and RS232 facility**
A touch screen or RS232 can be integrated into the monitor
- > **Inputs**
All monitors have 15-D, RCA and DVI-D connectors
- > **Rugged metal construction with good stability**
The LCD monitor has been designed with solidity, being housed in a compact metal construction with a toughened glass protection screen.



21.0" LCD HEAD MONITOR

29LM211A31MPY

DATASHEET

Electrical Description		Mechanical Description		
TFT Characteristics:	Type:	a-si TFT active matrix	Input:	15-D, RCA, BNC
	Max Resolution:	1600 x 1200 pixels	Housing	Painted aluminium
	Active Display Area:	432 x 324mm	User Controls:	Front mounted
	Response Time:	26ms average, typical	On Screen buttons	Brightness, Contrast, OSD
	Contrast Ratio:	800:1 typical		
	Brightness:	300cd/m ² typical		
	Viewing Angles (at CR>10):	178 ° / 178 °		
	Backlight Life:	50,000 hours typical		
	No. Colours:	16.7 Million		
	Video Signal:	Analog 0.7Vp-p PAL / NTSC		
Signal Sync:	Separate H&V (+/-ve) TTL Composite (CVBS) 1V p-p or Composite (-ve) TTL or Sync-on-Green (-ve) 0.3V			
Synchronisation Range:	Horizontal scan:	15hHz (PAL/NTSC) 30-50 KHz		
	Vertical scan:	50-70 Hz		
Display modes:	VESA Support:	640 x 480 VGA 800 X 600 SVGA 1024 x 768 XGA 1280 x 1024 SXGA 1600 x 1200 UXGA (recommended)		
Power Supply:	90 - 260V AC			
Power Consumption:	60W (Max)			
Environmental:	Storage Temp:	-20 to 65°C	Part Numbers:	
	Operating Temp:	0 to 50°C	Desktop Model:	29LM211A31MPY
			Resistive touch screen via RS232: (or USB option)	29LM211AR31MPY

Due to a policy of continuous product development KME reserves the right to change specifications and descriptions without prior notification. All trademarks acknowledged.

KENT MODULAR ELECTRONICS LTD
 621 Maidstone Road
 Rochester, Kent ME1 3QJ
 T: +44 (0)1634 830123 F: +44 (0)1634 830619
 E: sales@kme.co.uk W: www.kme.co.uk

