

# 21.3" CRT REPLACEMENT LCD MONITOR HEAD

29LM211A51UN/1

# DATASHEET

## SLOW SCAN LCD MONITORS

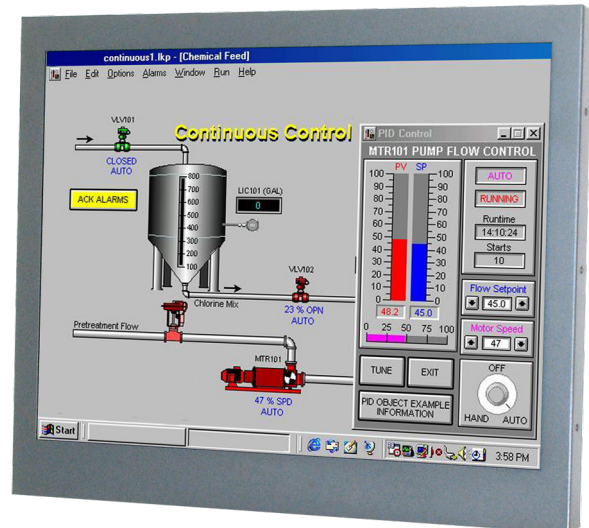
The 29LM211A51UN/1 series of Industrial LCD monitors have been designed as replacements for 21" CRT monitors now that supplies of 21" CRTs are difficult to obtain. Ease of integration into a wide range of Measurement, Instrumentation and Human-Machine interface applications has been a key consideration.

KME has designed a rugged LCD monitor module, of minimum width, to match the dimensions of its 21" CRT monitor chassis. The monitor is housed in a rugged metal case with rear fixing points. The LCD module is ventilated for best reliability when mounted within the OEM enclosure. EMC considerations include the use of a metal shield over the front of the LCD panel. Toughened, non-glare safety glass protects the LCD.

The A/D board has been designed to accept a wide range of signal timings from 15kHz up to SVGA standard, including CGA & EGA legacy signals. Set-up controls for fine-tuning of the display are located at the rear of the monitor. Once set, no further adjustments should be required, and the last setting is stored in memory.

### SOLUTIONS FOR DESKTOP MONITORS

- > CGA/EGA/VGA/SVGA compatible
- > Analogue Video inputs via BNC/15HD
- > TTL Inputs via 9D- 15D Accessory Cable
- > Programmable for non-standard Legacy signals
- > Rear OSD Controls for maximum versatility
- > Optional Touchscreen Integration



# 21.3" CRT REPLACEMENT LCD MON- ITOR HEAD

# DATASHEET

29LM211A51UN/1

Electrical Description		Mechanical Description						
<b>TFT Characteristics:</b>		<b>Dimensions:</b>				Weight: 11Kg approx		
Type:	AM Colour TFT	<b>Input:</b>				15D BNC x5, 9D		
Max Resolution:	1600 x 1200 pixels	<b>Housing</b>				Painted aluminium		
Active Display Area:	432 x 324 mm	<b>User Controls:</b>				Front Mounted		
No. Colours:	16 million	<b>On Screen buttons</b>				Brightness, Contrast, H/V Position, auto set-up disable, clock, clock phase and priority		
Contrast Ratio:	800:1 typical							
Brightness:	280cd/m <sup>2</sup> typical							
Viewing Angles (at CR>10):	178 ° H, 178 ° V	H. kHz	V. Hz	Pixels		H. kHz	V. Hz	Pixels
Backlight Life:	50,000 hours typical	15.625	50	714 * 288		15.63	50	560 * 275
Clock Rate:	135MHz max	15.63	60	808 * 238		15.72	60	564 * 240
<b>Sync. Type/Level:</b>	Separate H&V (+/-ve) TTL or Composite (-ve) TTL or Sync-on-Green (-ve) 0.3V	15.72	60	508 * 240		15.72	60	604 * 240
<b>Signal Sync:</b>	Analog RGB 0.7-1.0Vp-p	15.72	60	640 * 200		16.10	50	564 * 304
<b>Synchronisation Range:</b>		16.276	70	640 * 220		16.79	70	577 * 215
Horizontal scan:	15-91kHz	17.85	50	508 * 338		21.83	60	640 * 350
Vertical scan:	40-80Hz	20.65	50	640*384		24.78	60	640 * 384
<b>Slow Scan Support:</b> (see table examples)	Pre-programmed analog or TTL							
<b>Power Supply:</b>		90-260V 50/60Hz Power Pack inside base						
<b>Power Consumption:</b>		70W Max						
<b>Environmental:</b>		<b>Part Numbers:</b>				Desktop Model: 29LM211A51UN/1		
Storage Temp:	-20 to 60°C							
Operating Temp:	0 to 50°C							

Due to a policy of continuous product development KME reserves the right to change specifications and descriptions without prior notification. All trademarks acknowledged.

KENT MODULAR ELECTRONICS LTD  
621 Maidstone Road  
Rochester, Kent ME1 3QJ  
T: +44 (0)1634 830123 F: +44 (0)1634 830619  
E: sales@kme.co.uk W: www.kme.co.uk

