

19.0" SLOW SCAN LCD PANEL MOUNT MONITOR

29LP1901A51UN/3

DATASHEET

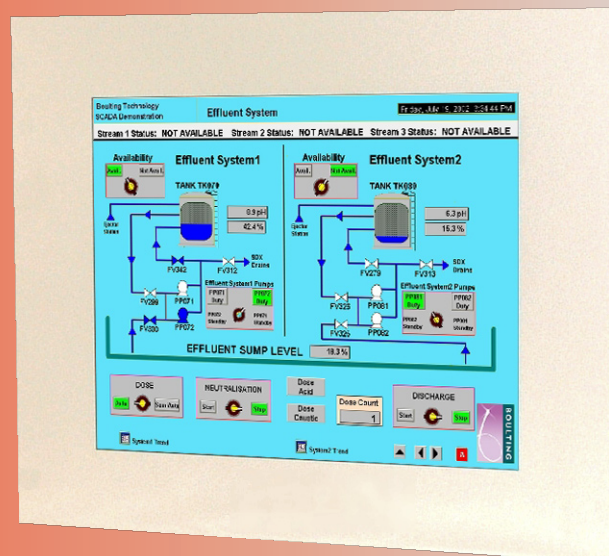
HIGH QUALITY, SLOW SCAN LEGACY SYSTEM REPLACEMENTS

The 29LP1901A51UN/3 Series of 19.0" LCD monitors has been designed primarily for Slow Scan Legacy Systems as replacements for 20"/21" CRT monitors. They utilize a modern SXGA TFT (1280 x 1024 pixels) panel and a KME-designed Analog-Digital interface board. All elements, including a toughened glass protection screen, have been packaged in a compact metal housing. (Dimensions are compatible with previous 18.1" series).

By special development of our own Signal Recognition and Scaling software, and access to an extensive library of older signal timings gained from 30+ years of CRT monitor manufacturing, KME has created a Multiscan ("Universal") flat panel monitor with unique 15kHz to 80kHz display capabilities. Some common Slow Scan Signal timings are factory pre-set. (see table on next page) New ones may be added on request. Other signals, which are close to those listed, will give a display but some adjustment may be necessary for full screen performance. The final settings can be easily stored for future use.

SOLUTIONS FOR SLOW SCAN MONITORS

- > **Specially designed for slow scan signals**
Accepts signal types CGA, EGA & all VESA standards up to SXGA. TTL, analog & interlaced signals accepted
- > **Deep dimming capability**
KME have developed a deep dimming solution for the slow scan range which provides smooth consistent dimming 100% to 0%.
- > **Inputs**
All monitors have BNC, 9-D & 15-D connectors
- > **Rugged metal construction with good stability**
The LCD monitor has been designed with solidity, being housed in a compact metal construction with a toughened glass protection screen.



19.0" SLOW SCAN LCD PANEL MOUNT MONITOR

29LP1901A51UN/3

DATASHEET

Electrical Description		Mechanical Description						
TFT Characteristics:	Type:	AM Colour TFT	Dimensions:		Monitor:	483 x 400 x 63 mm		
	Max Resolution:	1280 x 1024 pixels			Weight:	9kg approx		
	Active Display Area:	376 x 301 mm	Input:		9D, 15D, BNC x 5			
	Response Time:	15ms average, typical	Housing		Painted Steel			
	Contrast Ratio:	1000:1 typical	User Controls:		Front mounted			
	Brightness:	250cd/m ² typical	On Screen buttons		Brightness, Contrast, Auto set-up Disable, H/V Position, Clock, Clock Phase and Priority			
	Viewing Angles (at CR>10):	178° / 178° with CR≥10	Slow Scan Support: (see table examples below)		Pre-programmed Analog or TTL inputs in 15-40kHz range			
	Backlight Life:	50,000 hours typical						
	No. Colours:	16 million	H.kHz	V.Hz	Pixels	H.kHz	V.Hz	Pixels
Video Signal:		Analog RGB 0.7-1.0Vp-p Or TTL >2.75Vp-p	15.625	50	714*288	15.63	50	560*275
Signal Sync:		Separate H & V (+ve) TTL or Composite (-ve) TTL or Sync- on - Green (-ve) 0.3V	15.63	60	808*238	15.72	60	564*240
Synchronisation Range:	Horizontal scan:	15 to 80kHz	15.72	60	508*240	15.72	60	604*240
	Vertical scan:	40 to 100Hz	15.72	60	640*200	16.10	50	564*304
Clock Rates:		150MHz	16.276	70	640*220	16.79	70	577*215
Display modes:	VESA Support:	640 x 480 VGA 800 x 600 SVGA 1024 x 768 XGA 1280 x 1024 SXGA (recommended)	17.85	50	508*338	21.83	60	640*350
			20.65	50	640*384	24.78	60	640*384
Power Supply:	AC Version:	115/230V 50/60Hz Power Pack inside base 12V Option						
Power Consumption:		50W (Max)	Part Numbers:					
Environmental:	Storage Temp:	-20 to 60°C			AC Version:	29LP1901A51UN/3		
	Operating Temp:	0 to 50°C			DC Version:	29LP1901E51UN/3 (12Vdc)		

Due to a policy of continuous product development KME reserves the right to change specifications and descriptions without prior notification. All trademarks acknowledged.

KENT MODULAR ELECTRONICS LTD

621 Maidstone Road

Rochester, Kent ME1 3QJ

T: +44 (0)1634 830123 F: +44 (0)1634 830619

E: sales@kme.co.uk W: www.kme.co.uk



19.0" SLOW SCAN LCD PANEL MOUNT MONITOR

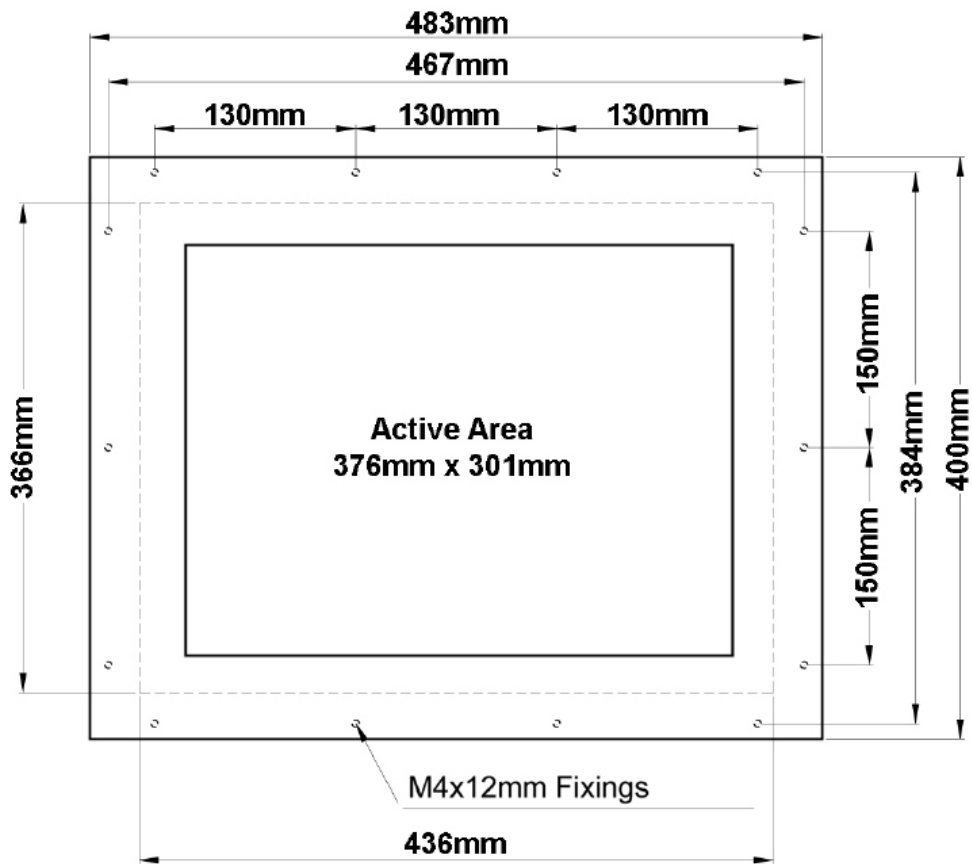
DATASHEET

29LP1901A51UN/3

SIDE VIEW



FRONT VIEW



Design Notes:

1. Panel /Rack Metal Thickness is 3mm

(Not to Scale)