

15.0" LCD RACK MOUNT MONITOR

29LR151A61MY

DATASHEET

HIGH QUALITY, LCD RACK MOUNT MONITOR

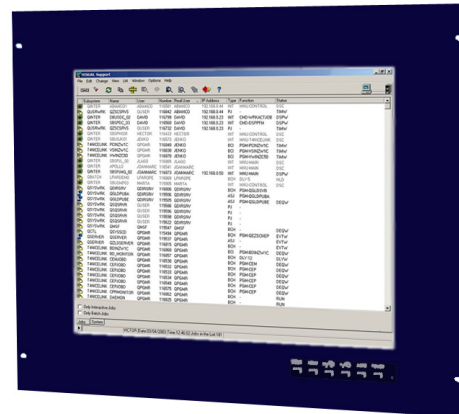
KME has developed a comprehensive range of Rack mountable LCD Monitors for Industrial applications. Our philosophy is quite simple – we use LCD monitor Heads (29LM series) from our existing flat-panel industrial monitor range and integrate them with metal panels to industry-standard dimensions.

Rack Mount Monitors have a full range of controls at the front (12" controls are at the rear) and standard spaced holes for 19" rack mounting. As a general rule Rack mounted monitors are normally supplied finished in RAL 7035.

We know that there will be occasions when this standard range is not exactly suited to all customer requirements – and we remain willing to customise colours or dimensions to market demands.

SOLUTIONS FOR RACK MOUNT MONITORS

- > **Rugged metal construction with good stability**
The LCD monitor has been designed with solidity, being housed in a compact metal construction with a toughened glass protection screen.
- > **Optional touch screen facility**
A touch screen can be integrated into the monitor
- > **Inputs**
All monitors have 15-D connectors and DVI-D



RAL7035 is stock colour – other colours available on request

15.0" LCD RACK MOUNT MONITOR

29LR151A61MY

DATASHEET

Electrical Description		Mechanical Description	
TFT Characteristics:	Type:	a-si TFT active matrix	Input: 15-D, DVI-D
	Max Resolution:	1024 x 768 pixels	Housing: Painted aluminium
	Active Display Area:	304mm x 228mm	User Controls: Front mounted
	Response Time:	20ms average, typical	On Screen buttons: Brightness, Contrast, OSD
	Contrast Ratio:	450:1 typical	
	Brightness:	230cd/m ² typical	
	Viewing Angles (at CR>10):	130° / 110°	
	Backlight Life:	50,000 hours typical	
	No. Colours:	16 Million	
Video Signal:	Analog RGB 0.7-1.0Vp-p		
Signal Sync:	Separate H&V (+/-ve) TTL		
Synchronisation Range:	Horizontal scan:	30kHz - 50kHz	
	Vertical scan:	50 to 70Hz	
Display modes:	VESA Support:	640 x 480 VGA 800 X 600 SVGA 1024 x 768 XGA (recommended)	
Power Supply:	90 - 260V AC 50/60Hz		
Power Consumption:	35W (Max)		
Environmental:	Storage Temp:	-25 to 50°C	Part Numbers:
	Operating Temp:	0 to 50°C	Part number: 29LR151A61MY
			Resistive touch screen via RS232: (or USB option) 29LR151AR61MY

Due to a policy of continuous product development KME reserves the right to change specifications and descriptions without prior notification. All trademarks acknowledged.

KENT MODULAR ELECTRONICS LTD
621 Maidstone Road
Rochester, Kent ME1 3QJ
T: +44 (0)1634 830123 F: +44 (0)1634 830619
E: sales@kme.co.uk W: www.kme.co.uk

