

17.0" LCD RACK MOUNT MONITOR

29LR171A61MP/5

DATASHEET

HIGH QUALITY, LCD RACK MOUNT MONITOR

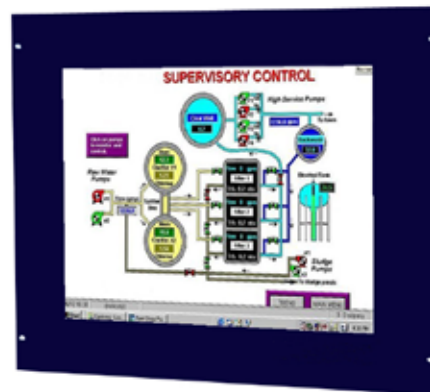
KME has developed this display module for industrial applications where an economically priced SXGA TFT flat panel monitor is required with a bright screen and wide viewing angles. The unit is constructed from painted aluminium and incorporates triple data input including PAL/NTSC, enabling applications in security surveillance and machine vision to be addressed.

Automatic mode detection and picture scaling circuitry allow the display of resolutions lower than the 1280 x 1024 pixels native resolution.

The 29LR171A61MP/5 series is supplied with non-glare toughened glass protection screens as standard or no additional glass for those demanding SXGA applications where ultimate clarity is necessary.

SOLUTIONS FOR MONITOR HEADS

- > **Rugged metal construction with good stability**
The LCD monitor has been designed with solidity, being housed in a compact metal construction with a toughened glass protection screen.
- > **Optional touch screen facility**
A touch screen can be integrated into the monitor
- > **Inputs**
All monitors have RCA and 15-D connectors



17.0" LCD HEAD MONITOR

29LM171A61MP/5

DATASHEET

Electrical Description		Mechanical Description	
TFT Characteristics:		Dimensions:	Monitor: 404 x 334 x 57mm
			Weight: 5kg approx
Type:	a-si TFT active matrix	Input:	RCA, 15-D, 4 pin mini DIN
Max Resolution:	1280 x 1024 pixels	Housing	Painted aluminium
Active Display Area:	337.9 x 270.3mm	User Controls:	Front mounted
Response Time:	25ms average, typical	On Screen buttons	Standby, Auto Set-up, Brightness, Contrast, OSD
Contrast Ratio:	450:1 typical		
Brightness:	250cd/m ² typical		
Viewing Angles (at CR>10):	160 ° / 160 °		
Backlight Life:	50,000 hours typical		
No. Colours:	16 Million		
Video Signal:	PAL / NTSC Analog 0.7Vp-p		
Signal Sync:	Composite (CVBS) 1V p-p Separate H&V (+/-ve) TTL Sync-on-Green -0.3Vp-p		
Synchronisation Range:			
Horizontal scan:	15kHz (Pal / NTSC) 30kHz - 60kHz		
Vertical scan:	50 to 80Hz		
Display modes:			
VESA Support:	640 x 480 VGA 800 X 600 SVGA 1024 x 768 XGA 1280 x 1024 SXGA(recommended)		
Power Supply:	90 - 260V AC 50/60Hz		
Power Consumption:	60W (Max)	Part Numbers:	
Environmental:		Model Number:	29LR171A61MP/5
Storage Temp:	-20 to 65°C	Resistive touch screen via RS232: (or USB option)	29LR171AR61MP/5
Operating Temp:	0 to 50°C		

Due to a policy of continuous product development KME reserves the right to change specifications and descriptions without prior notification. All trademarks acknowledged.

KENT MODULAR ELECTRONICS LTD
621 Maidstone Road
Rochester, Kent ME1 3QJ
T: +44 (0)1634 830123 F: +44 (0)1634 830619
E: sales@kme.co.uk W: www.kme.co.uk

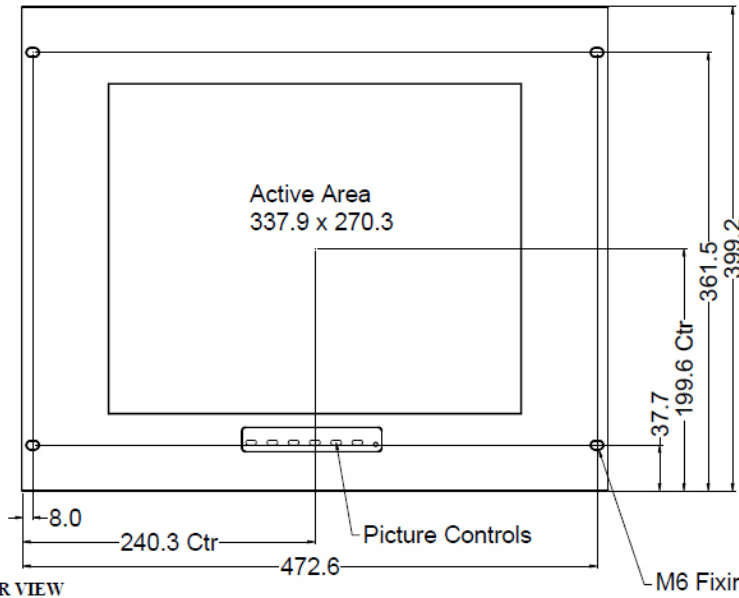


17.0" LCD HEAD MONITOR

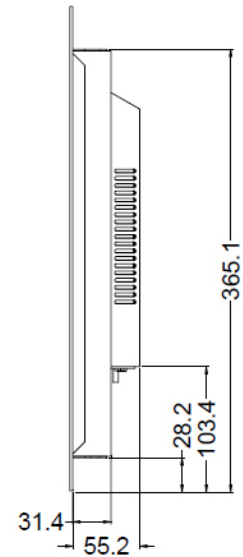
29LM171A61MP/5

DATASHEET

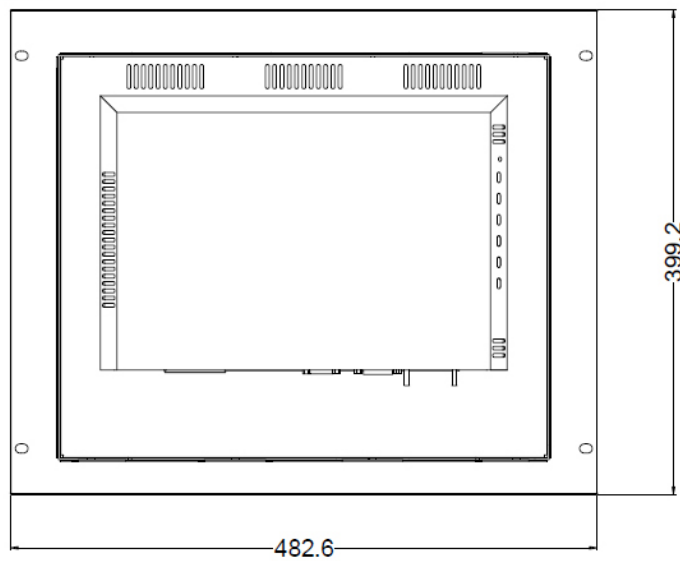
FRONT VIEW



SIDE VIEW



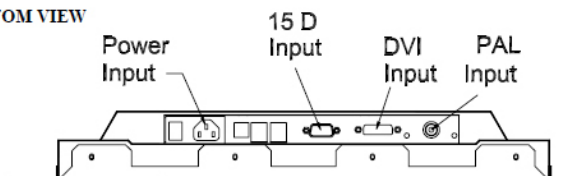
REAR VIEW



All dimensions in millimetres
(Not to scale)

Rack Panel Colour
RAL 7032

BOTTOM VIEW



KENT MODULAR ELECTRONICS LTD

621 Maidstone Road

Rochester, Kent ME1 3QJ

T: +44 (0)1634 830123 F: +44 (0)1634 830619

E: sales@kme.co.uk W: www.kme.co.uk

