

# 19.0" RACK MOUNT LCD MONITOR

## 29LR1901A61M/2

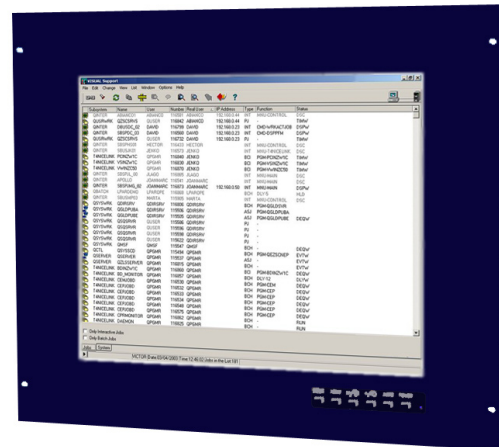
# DATASHEET

## HIGH QUALITY, LCD MULTI SCAN MONITOR

The 29LR190A61M/2 series has this capability of displaying high quality VGA to SXGA data signals. Two separate signal sources can be connected simultaneously and automatically switched on a Priority basis. Alternatively the video images may be presented as a "Picture in Picture" over a data image. This selection is set-up by the sophisticated OSD controls that also enable picture zoom, flip, rotate and freeze frame features. Remote access to the OSD controls is also available via the RS232 serial port.

### SOLUTIONS FOR MONITOR HEADS

- > **Rugged metal construction with good stability**  
The LCD monitor has been designed with solidity, being housed in a compact metal construction with a toughened non - glare glass protection screen.
- > **Optional touch screen facility**  
A touch screen can be easily integrated into the monitor
- > **Inputs**  
All monitors have 15-D connectors, DVI-D
- > **Deep dimming capability**  
The monitors have the capability of deep dimming (100% - 0%)



# 19.0" RACK MOUNT

# LCD MONITOR

29LR1901A61M/2

# DATASHEET

Electrical Description		Mechanical Description	
<b>TFT Characteristics:</b>		<b>Dimensions:</b>	Monitor: 483 x 399 x 69mm
			Weight: 8kg approx
Type:	a-si TFT active matrix	<b>Input:</b>	15-D, DVI-D
Max Resolution:	1280 x 1024 pixels	<b>Housing</b>	Painted aluminium
Active Display Area:	376mm x 301mm	<b>User Controls:</b>	Front mounted
Response Time:	20ms average, typical	<b>On Screen buttons</b>	Brightness, Contrast, OSD
Contrast Ratio:	1000:1 typical		
Brightness:	250cd/m <sup>2</sup> typical		
Viewing Angles (at CR>10):	178 ° / 178 °		
Backlight Life:	50,000 hours typical		
No. Colours:	16.7 Million		
<b>Video Signal:</b>	Analog RGB 0.7-1.0Vp-p		
<b>Signal Sync:</b>	Separate H&V (+/-ve) TTL		
<b>Synchronisation Range:</b>			
Horizontal scan:	30kHz - 80kHz,		
Vertical scan:	50 to 80Hz		
<b>Display modes:</b>			
VESA Support:	640 x 480 VGA 800 X 600 SVGA 1024 x 768 XGA 1280 x 1024 SXGA (recommended)		
<b>Power Supply:</b>	90 - 260V AC 50/60Hz		
<b>Power Consumption:</b>	60W (Max)	<b>Part Numbers:</b>	
<b>Environmental:</b>		Part number:	29LR1901A61M/2
Storage Temp:	-20 to 65°C	Resistive touch screen via RS232: (or USB option)	29LR1901AR61M/2
Operating Temp:	0 to 50°C		

Due to a policy of continuous product development KME reserves the right to change specifications and descriptions without prior notification. All trademarks acknowledged.

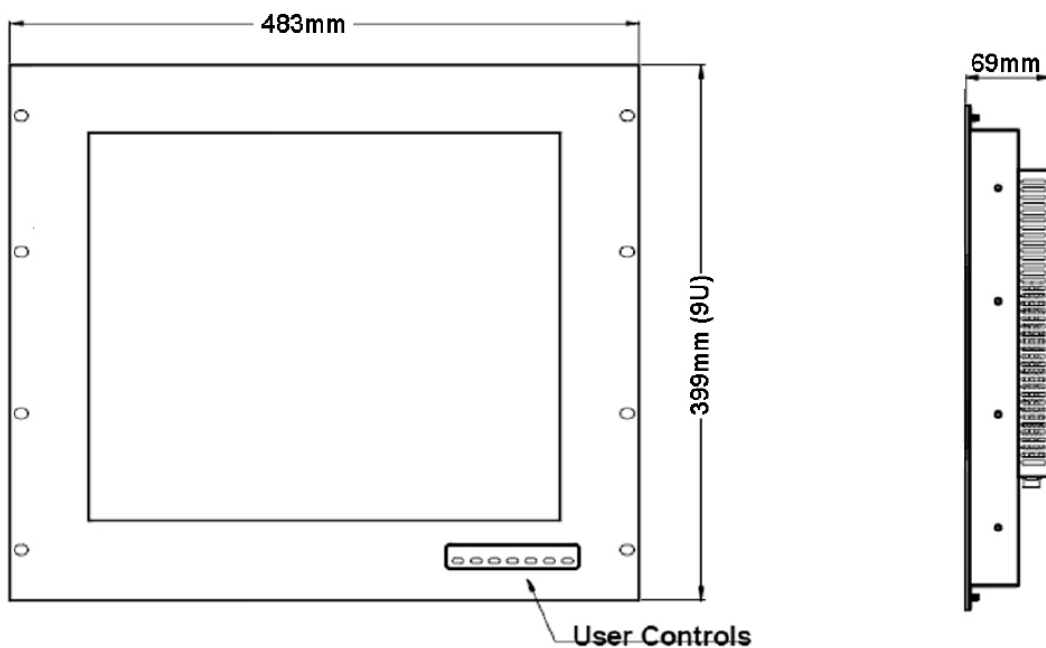
KENT MODULAR ELECTRONICS LTD  
621 Maidstone Road  
Rochester, Kent ME1 3QJ  
T: +44 (0)1634 830123 F: +44 (0)1634 830619  
E: sales@kme.co.uk W: www.kme.co.uk



# 19.0" RACK MOUNT LCD MONITOR

29LR1901A61M/2

DATASHEET



## Design Notes:

1. Rack Metal Thickness is 3mm

\* Handles fitted by request

(Not to Scale)