

CHASSIS HEAD

29LS103E71UN/2

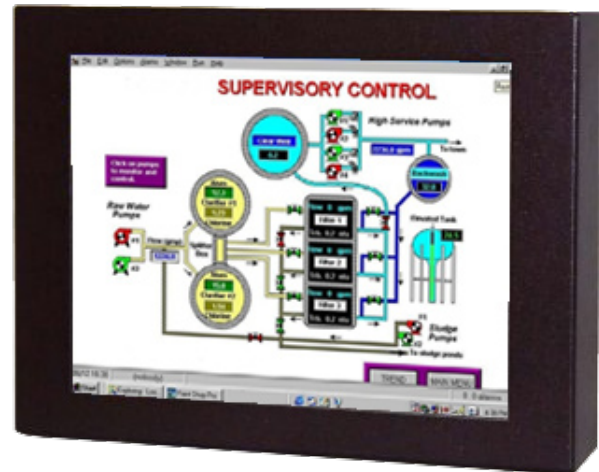
SVGA AND OLD LEGACY SIGNALS

The 29LS103E71UN/2 series of LCD chassis monitors has been designed for industrial applications in the Control field and other users that require a compact VGA monitor with a small footprint and a high brightness display with good viewing angles. The rugged, metal construction of the monitor ensures exceptional stability, especially important when touchscreen operation is necessary. Adjustable top and bottom fixing brackets allow easy mounting of the chassis to a front panel.

The KME A/D board has been designed to accept a wide range of signal timings from 15kHz up to VGA standard, including CGA & EGA legacy signals. Set-up controls for fine tuning of the display are located at the rear of the monitor. Once set, no further adjustments should be required, and the last setting is stored in memory.

SOLUTIONS FOR SLOW SCAN MONITORS

- > High Brightness/High Contrast TFT panel
- > 15 to 60kHz Horizontal Scanning range
- > 40 to 100 Hz Vertical Scanning range
- > Programmable for non-standard Legacy signals
- > Rugged Metal Construction with Good Stability
- > Optional Touchscreen Integration



Fixing brackets not shown

10.4" CRT REPLACEMENT LCD

DATASHEET

CHASSIS HEAD

29LS103E71UN/2

Electrical Description		Mechanical Description	
TFT Characteristics:		Dimensions:	Monitor (approx): 258 x 195 x 70mm
			Weight: 2 kg (approx)
Type:	AM Colour TFT	Input:	5 x BNC 75Ω 15-pin HD Female
Max Resolution:	800 x 600 pixels	Housing	Painted aluminium
Active Display Area:	211.2 x 158.4 mm	User Controls:	Rear Mounted
No. Colours:	256k	On Screen buttons	Brightness, Contrast, H/V Position & Size, Frequency, Frequency Fine
Contrast Ratio:	500:1 typical		
Brightness:	400cd/m ² typical		
Viewing Angles (at CR>10):	120° H, 100° V		
Backlight Life:	50,000 hours typical		
Clock rate:	80MHz max		
Sync. Type/Level:	Separate H&V (+/-ve) TTL or Composite (-ve) TTL or Sync-on-Green (-ve) 0.3V		
Signal Sync:	Analog RGB 0.7-1.0Vp-p OR TTL RGB>2.75Vp-p (via special TTL accessory cable)		
Synchronisation Range:			
Horizontal scan:	15-60kHz		
Vertical scan:	40-100Hz		
Multiscan Support:	800 x 600 SVGA 640 x 480 VGA + pre-programmed timings in 15-30kHz range		
Power Supply:	12V DC		
Power Consumption:	30W Max	Part Numbers:	
Environmental:		Desktop Model:	29LS103E71UN/2
Storage Temp:	-20 to 60°C		
Operating Temp:	0 to 50°C		

Due to a policy of continuous product development KME reserves the right to change specifications and descriptions without prior notification. All trademarks acknowledged.

KENT MODULAR ELECTRONICS LTD
621 Maidstone Road
Rochester, Kent ME1 3QJ
T: +44 (0)1634 830123 F: +44 (0)1634 830619
E: sales@kme.co.uk W: www.kme.co.uk

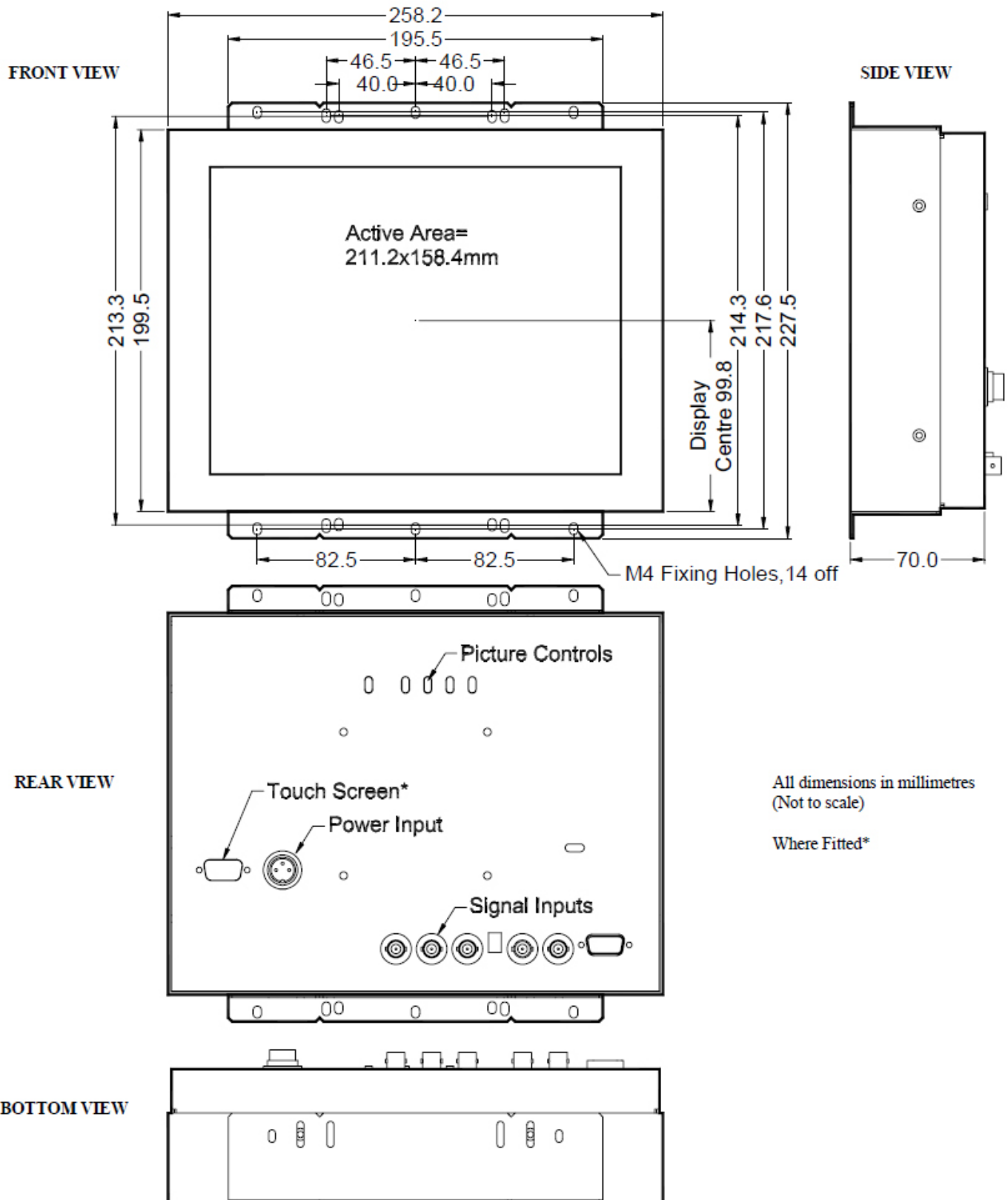


10.4" CRT REPLACEMENT LCD

DATASHEET

CHASSIS HEAD

29LS103E71UN/2



All dimensions in millimetres
(Not to scale)

Where Fitted*

