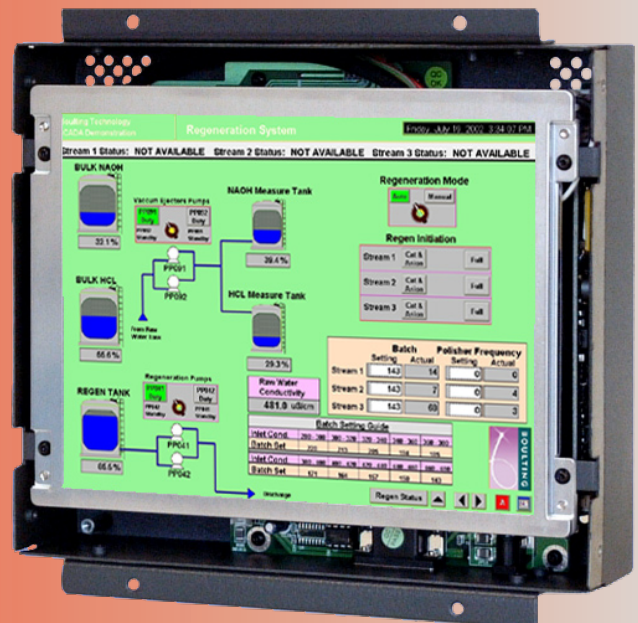


HIGH QUALITY, LCD CHASSIS MONITOR

The 29LS121E61PY series of LCD monitor heads has been designed for industrial applications that require a compact VGA/SVGA compatible monitor with good viewability. It is constructed from painted Aluminium, making it light in weight with good rigidity. Adjustable fixing brackets allow easy mounting of the chassis to a front panel.

SOLUTIONS FOR PANEL MOUNT MONITORS

- > **Rugged metal construction with good stability**
The LCD monitor has been designed with solidity, being housed in a compact metal construction with a toughened glass protection screen.
- > **Optional touch screen facility**
A touch screen can be integrated into the monitor
- > **Inputs**
All monitors have RCA connectors



12.1" LCD CHASSIS MONITOR

29LS121E61PY

DATASHEET

Electrical Description		Mechanical Description	
TFT Characteristics:	Type:	AM Colour TFT	Dimensions: Monitor: 291 x 261 x 53 mm
	Max Resolution:	800 x 600 pixels	Weight: 1.7kg approx
Active Display Area:	246 x 184.5 mm	Input:	RCA
Response Time:	25ms average, typical	Housing	Painted aluminium
Contrast Ratio:	350:1 typical	User Controls:	Rear mounted
Brightness:	350 cd/m2 typical	On Screen buttons	Brightness, Contrast, OSD
Viewing Angles (at CR>10):	120°H , 90°V		
Backlight Life:	50,000 hours typical		
No. Colours:	256k		
Video Signal:	PAL / NTSC		
Signal Sync:	Composite (CVBS) 1 V p-p		
Synchronisation Range:			
Horizontal scan:	15kHz (PAL / NTSC)		
Vertical scan:	50 to 70Hz		
Power Supply:	12.0Vdc at 0.8 A approx.		
Power Consumption:	20W (Max)		
Environmental:	Storage Temp: -20 to 60°C Operating Temp: 0 to 50°C	Part Numbers:	
		Part number:	29LS121E61PY
		Touch screen Model RS232:	29LS121ER61PY

Due to a policy of continuous product development KME reserves the right to change specifications and descriptions without prior notification. All trademarks acknowledged.

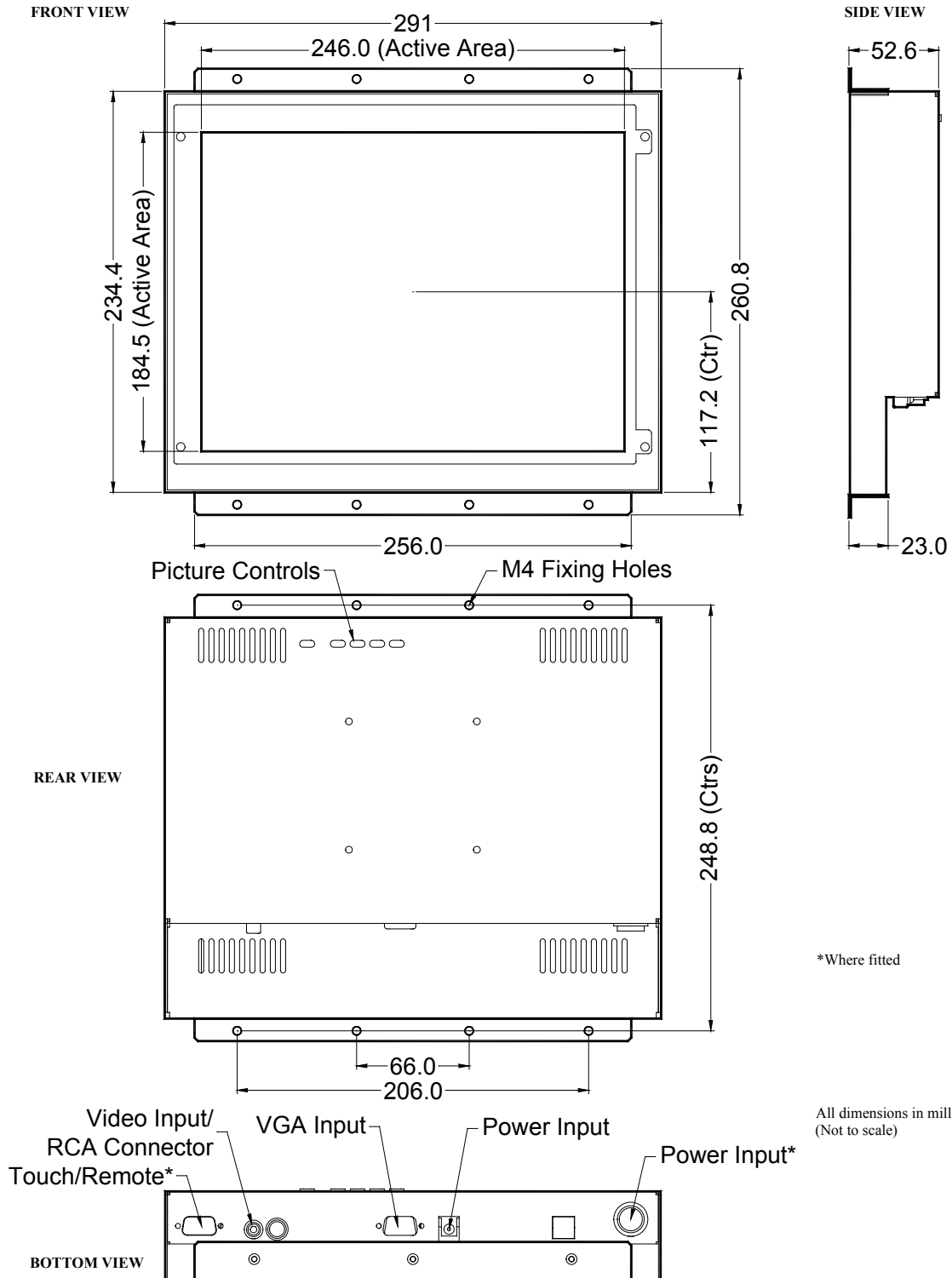
KENT MODULAR ELECTRONICS LTD
 621 Maidstone Road
 Rochester, Kent ME1 3QJ
 T: +44 (0)1634 830123 F: +44 (0)1634 830619
 E: sales@kme.co.uk W: www.kme.co.uk



12.1" LCD CHASSIS MONITOR

29LS121E61PY

DATASHEET



KENT MODULAR ELECTRONICS LTD
621 Maidstone Road
Rochester, Kent ME1 3QJ
T: +44 (0)1634 830123 F: +44 (0)1634 830619
E: sales@kme.co.uk W: www.kme.co.uk

