

CHASSIS HEAD

29LS151E71UN/1

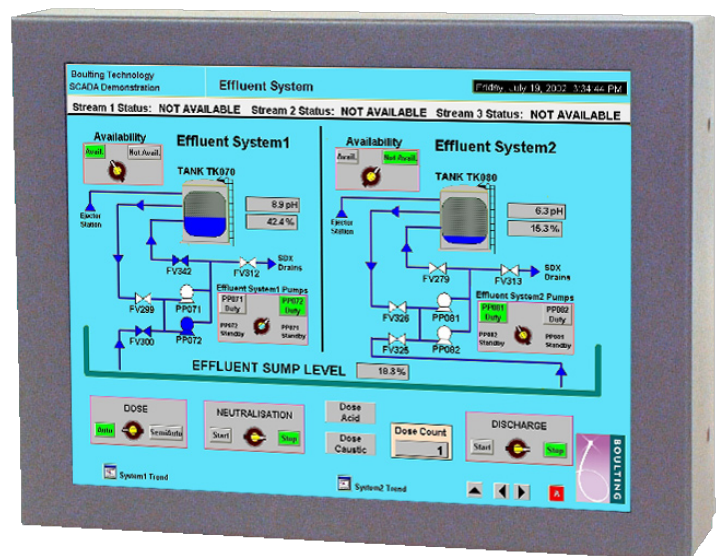
XGA AND OLD LEGACY SIGNALS

The 29LS151E71UN/1 Series of 15.0" LCD monitors has been designed primarily for Slow Scan Legacy Systems as replacements for CRT monitors. They utilise a modern XGA TFT (1024 x 768 pixels) panel and a KME-designed Analog-Digital interface board. All elements have been packaged in a compact metal housing. (Dimensions are compatible with previous 15.1" series). Adjustable top & bottom fixing brackets allow easy mounting of the chassis to a front panel.

By special development of their own Signal Recognition and Scaling software KME has created a Universal flat panel monitor with unique 15kHz to 60kHz display capabilities. Some common Slow Scan Signal timings are factory pre-set. New ones may be added on request. Other signals, which are close to those listed, will give a display but some adjustment may be necessary for full screen performance. The final settings can be easily stored for future use.

SOLUTIONS FOR SLOW SCAN MONITORS

- > Specially Designed for Slow Scan Signals
- > CGA, EGA & all VESA Standards up to XGA
- > TTL, Analog & Interlaced Signals Accepted
- > Accessory Cables for BNC & 9D Inputs
- > Versatile Panel Mounting Brackets



Fixing brackets not shown

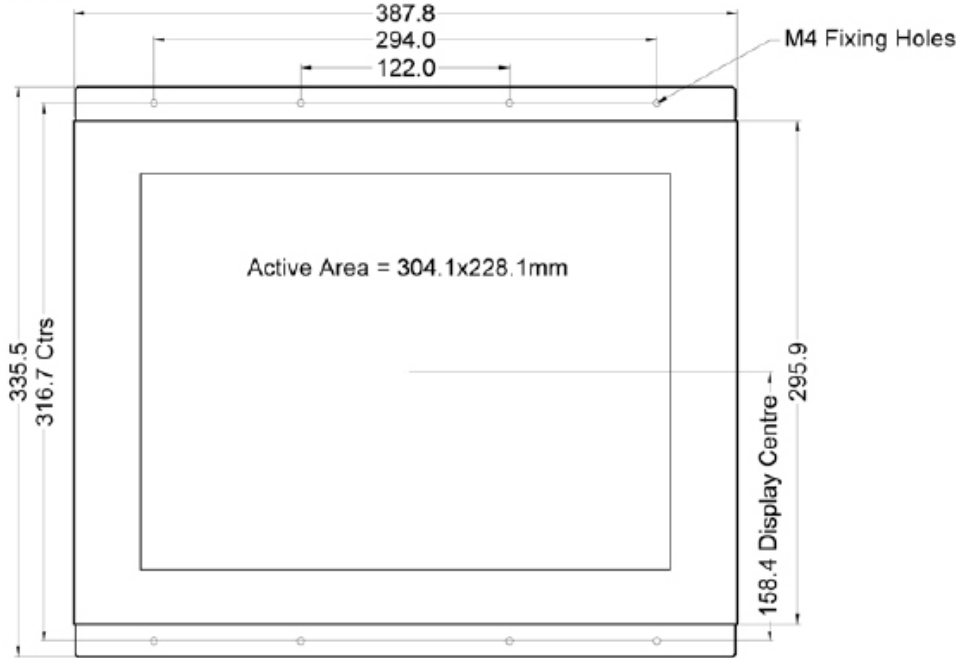
15" CRT REPLACEMENT LCD

DATASHEET

CHASSIS HEAD

29LS151E71UN/1

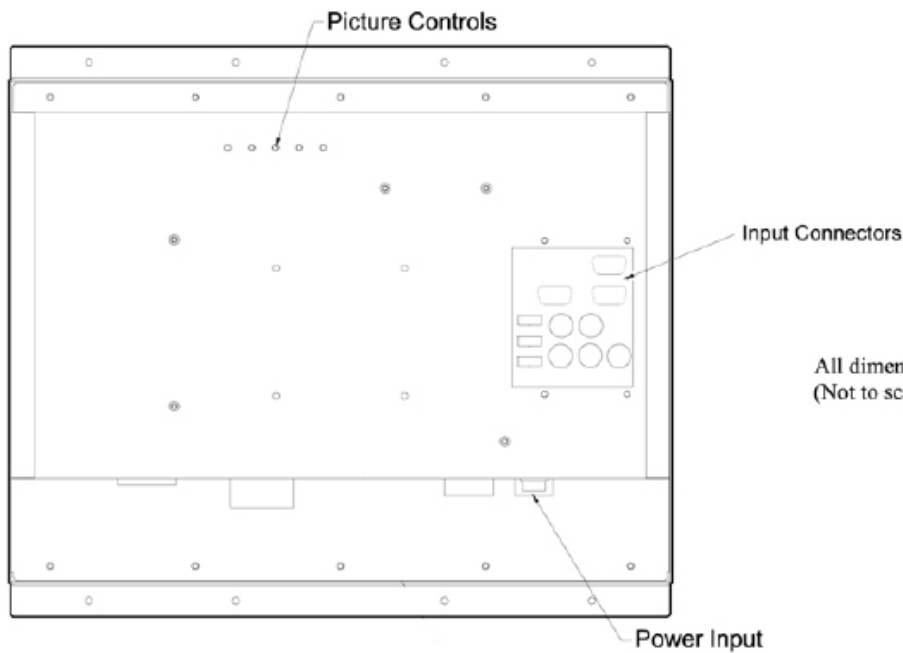
FRONT VIEW



SIDE VIEW



REAR VIEW



All dimensions in millimetres
(Not to scale)

BOTTOM VIEW

