

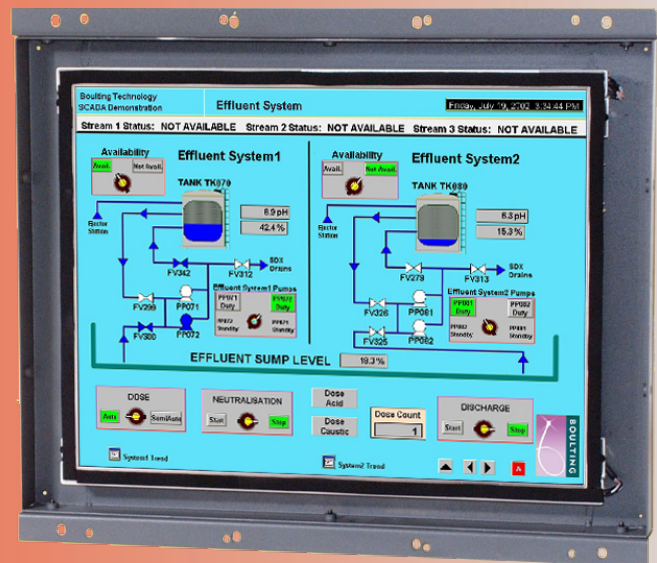
## HIGH QUALITY, LCD CHASSIS MONITOR

KME has developed this 19.0" Chassis model, within the popular 29LS series of LCD monitors, to address the growing demand from system builders for a monitor that is capable of displaying PAL/NTSC video and VGA to SXGA resolution data signals.

The 29LS1901E31MPY/1 series has this capability. Two separate signal sources (e.g. Camera/VCR + Computer RGB) can be connected simultaneously and automatically switched full screen, on a Priority basis. Alternatively the video images may be presented as a "Picture in Picture" over a data image. This selection is set-up by the sophisticated OSD controls that also validate the picture zoom, flip, rotate and freeze frame features. Remote access to the OSD controls is also available via the RS232 serial port.

### SOLUTIONS FOR PANEL MOUNT MONITORS

- > **Rugged metal construction with good stability**  
The LCD monitor has been designed with solidity, being housed in a compact metal construction with a toughened glass protection screen.
- > **Optional touch screen facility**  
A touch screen can be integrated into the monitor
- > **Inputs**  
All monitors have RCA, DVI-D and 15-D connectors



# 19.0" LCD CHASSIS MONITOR

# DATASHEET

29LS1901E31MPY/1

Electrical Description		Mechanical Description	
<b>TFT Characteristics:</b>	Type:	a-si TFT active matrix	<b>Input:</b>
	Max Resolution:	1280 x 1024 pixels	RCA, DVI-D, 15-D
	Active Display Area:	376 x 301 mm	<b>Housing</b>
	Response Time:	20ms average, typical	Painted aluminium
	Contrast Ratio:	1000:1 typical	<b>User Controls:</b>
	Brightness:	250cd/m <sup>2</sup> typical	Rear mounted
	Viewing Angles (at CR>10):	178° H, 178° V	<b>On Screen buttons</b>
	Backlight Life:	50,000 hours typical	Brightness, Contrast, OSD
	No. Colours:	16.7 million	
<b>Video Signal:</b>		PAL / NTSC Analog 0.7Vp-p	
<b>Signal Sync:</b>		Composite (CVBS) 1 V p-p Separate H&V (+/-ve) TTL Sync-on-green -0.3Vp-p	
<b>Synchronisation Range:</b>			
	Horizontal scan:	15kHz (PAL / NTSC) 30kHz - 50kHz	
	Vertical scan:	50 to 60Hz	
<b>Power Supply:</b>		12.0 V DC	
<b>Power Consumption:</b>		50W (Max)	
			<b>Part Numbers:</b>
<b>Environmental:</b>			Part number:
	Storage Temp:	-25 to 65°C	29LS1901E31MPY/1
	Operating Temp:	0 to 50°C	Touch screen Model RS232:
			29LS1901ER31MPY/1

Due to a policy of continuous product development KME reserves the right to change specifications and descriptions without prior notification. All trademarks acknowledged.

KENT MODULAR ELECTRONICS LTD  
 621 Maidstone Road  
 Rochester, Kent ME1 3QJ  
 T: +44 (0)1634 830123 F: +44 (0)1634 830619  
 E: sales@kme.co.uk W: www.kme.co.uk

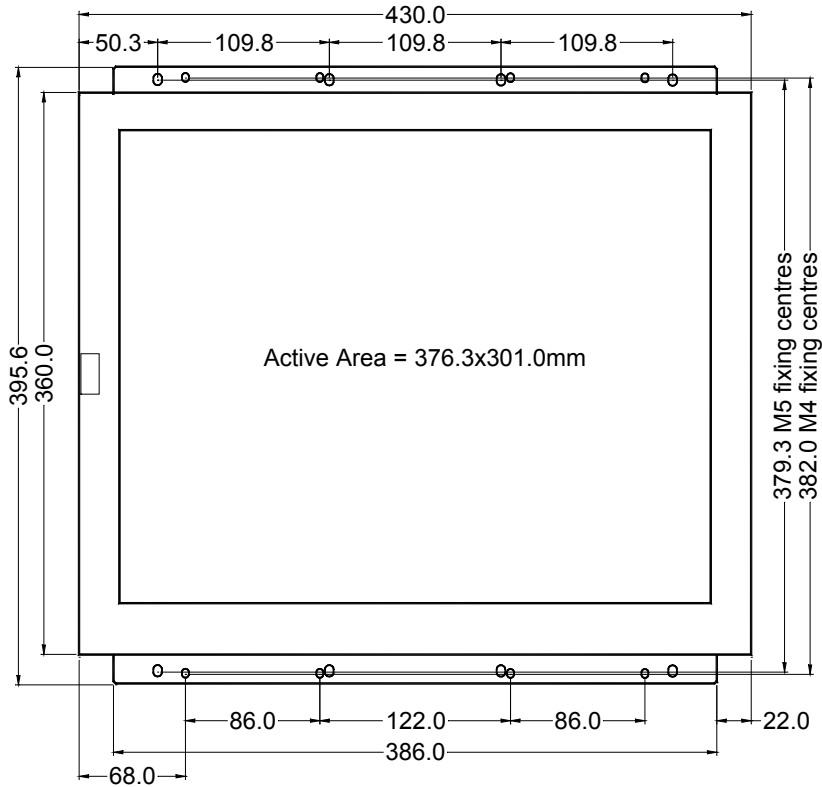


# 19.0" LCD CHASSIS MONITOR

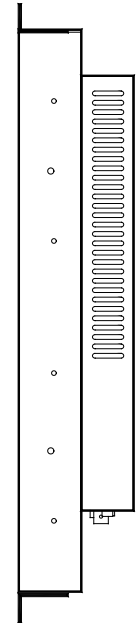
29LS1901E31MPY/1

# DATASHEET

FRONT VIEW

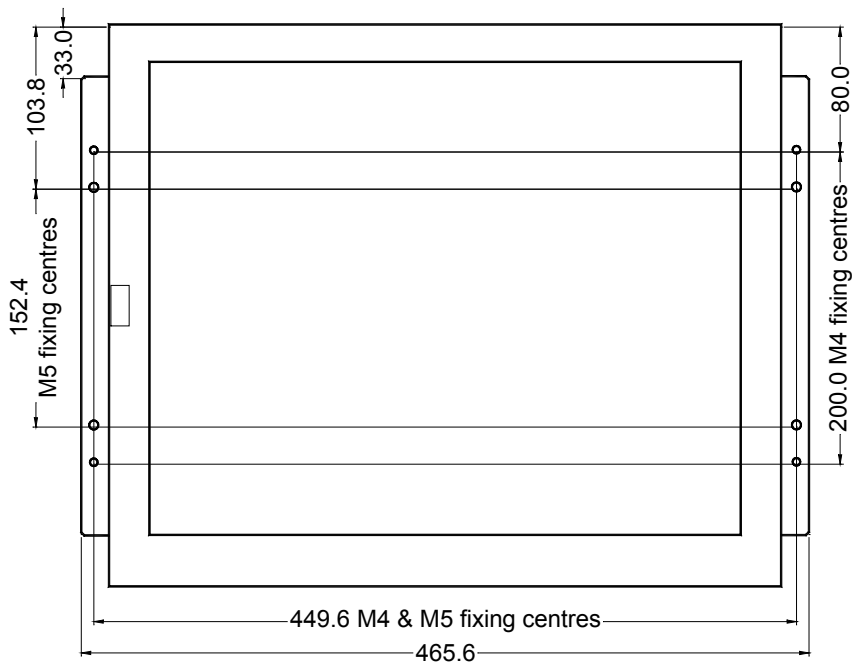


SIDE VIEW

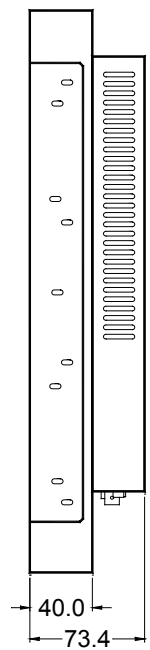


Top & Bottom Brackets

FRONT VIEW



SIDE VIEW



Side Brackets

All dimensions in millimetres  
(Not to scale)