

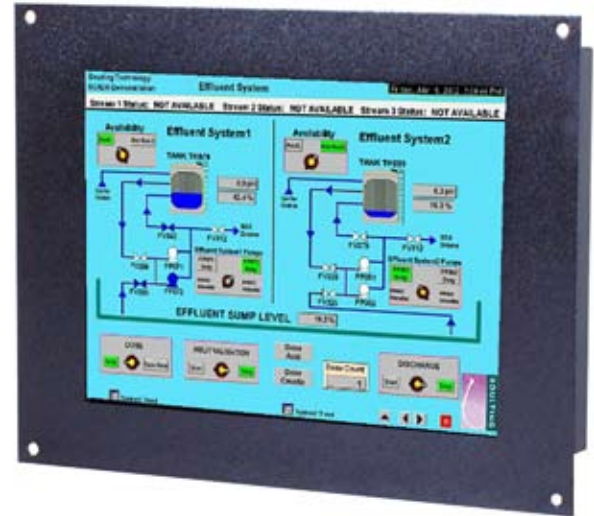
# 12.1" LCD CHASSIS REPLACEMENT

# DATASHEET

## FOR 14" CRT

29LV123A61MY

Electrical Description	
<b>TFT Characteristics:</b>	
Type:	AM colour TFT
No. of colours:	256k
Max resolution:	800 x 600 pixels
Active display area:	246 x 184.5 mm
Brightness:	400cd/m <sup>2</sup>
Backlight life:	50,000 hours
Contrast ratio:	500:1 typical
Viewing angles:	140°H, 110°V
Input connectors:	5 x BNC 75R 15-pin HD Female
<b>Video Signal:</b>	Analog RGB 0.7Vp-p
<b>Signal Sync:</b>	Separate H&V (+/-ve) TTL
<b>Synchronisation Range:</b>	
Horizontal scan:	15kHz - 60kHz
Vertical scan:	40-100Hz
<b>Multiscan Support:</b>	640 x 480 VGA 800 x 600 SVGA + pre-programmed timings in 15-30kHz range
<b>Power Supply:</b>	90 - 260V AC DC option available
<b>Clock rate:</b>	80MHz max
<b>Power Consumption:</b>	30W max
Physical / Environmental	
<b>Front Panel:</b>	Black painted aluminium
<b>Dimensions (approx):</b>	340 x 268 x 55mm
<b>Weight:</b>	3.8kg approx
<b>Operating Temp:</b>	0 to 50°C
<b>Storage Temp:</b>	-20 to 60°C
Part Numbers:	
<b>Model Number:</b>	29LV123A61MY
<b>Optional Model:</b>	29LV123E61MY (12V DC)



- For 14" colour CRT monitor replacement
- Front plate to suit 14" CRT fixing lug
- Original CRT chassis stays in place
- Analogue & TTL video inputs
- Non-standard legacy signals easily programmed
- Non glare acrylic for TFT protection
- Optional touchscreen integration

The 29LV123A61MY Industrial LCD monitor has been designed as replacement for 14" CRT monitors now that supplies of 14" CRTs are difficult to obtain. The monitor has been designed for industrial applications that require a compact, SVGA compatible monitor with good viewability.

KME has designed a rugged LCD monitor module, of minimum width, to match the dimensions of many 14" CRT monitor chassis. When the CRT is removed from the existing chassis metalwork the LCD monitor (mounted on a metal panel with fixing holes to match the CRT Lugs) can be fitted in place.

Set-up controls for finetuning of the display are located at the rear of the monitor. Once set, no further adjustments should be required, and the last setting is stored in memory.

Note: The Active Display Area on a 14" Colour CRT is typically 260 x 195mm. On the 12.1" TFT it is 246 x 184.5mm

Due to a policy of continuous product development KME reserves the right to change specifications and descriptions without prior notification. All trademarks acknowledged.

KENT MODULAR ELECTRONICS LTD

621 Maidstone Road

Rochester, Kent ME1 3QJ

T: +44 (0)1634 830123 F: +44 (0)1634 830619

E: sales@kme.co.uk W: www.kme.co.uk

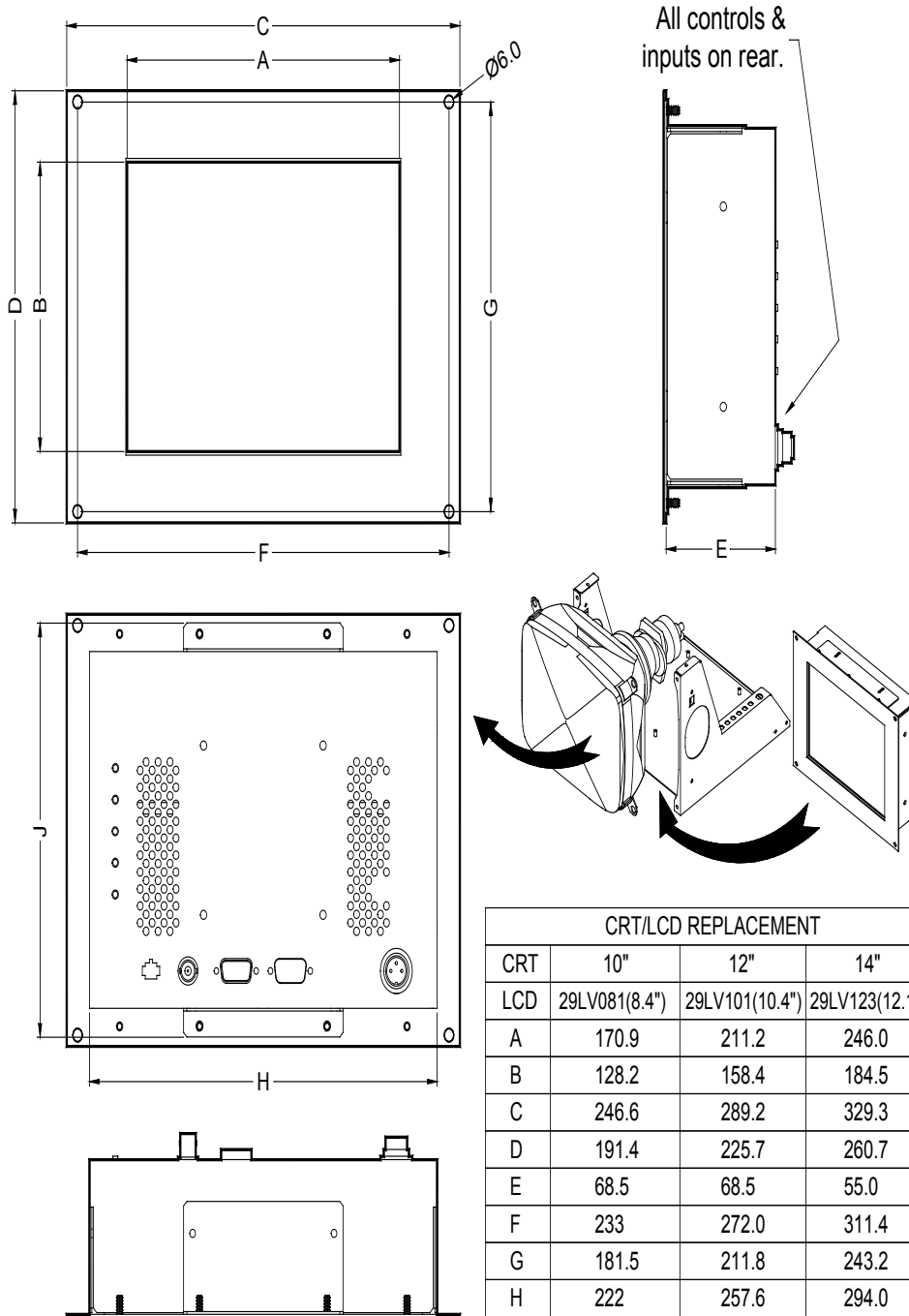


# 12.1" LCD CHASSIS REPLACEMENT

# DATASHEET

## FOR 14" CRT

29LV123A61MY



CRT/LCD REPLACEMENT			
CRT	10"	12"	14"
LCD	29LV081(8.4")	29LV101(10.4")	29LV123(12.1")
A	170.9	211.2	246.0
B	128.2	158.4	184.5
C	246.6	289.2	329.3
D	191.4	225.7	260.7
E	68.5	68.5	55.0
F	233	272.0	311.4
G	181.5	211.8	243.2
H	222	257.6	294.0
J	183.5	221.9	238.0

All dimensions in Millimetres  
(Not to scale)

