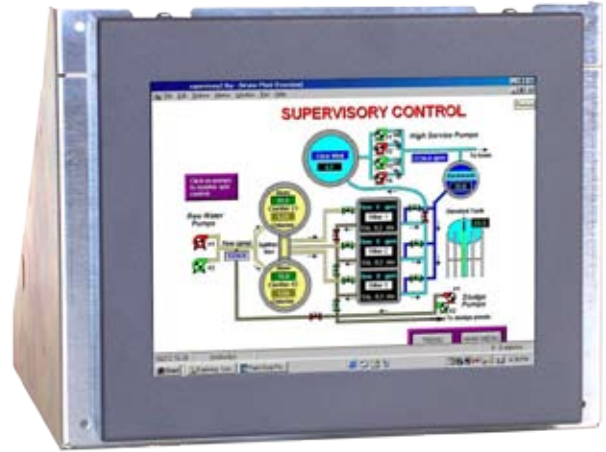


# 8.4" LCD CHASSIS REPLACEMENT FOR 10" CRT 29LW10A71UN/1

# DATASHEET

Electrical Description	
<b>TFT Characteristics:</b>	
Safety glass fitted:	Yes
Front cover standard colour:	Grey
Active display area:	170.4 x 127.8mm
10" CRT display area:	175 x 130mm typical
Brightness:	350cd/m <sup>2</sup>
Backlight life:	50,000 hours
Input connectors:	15D only (order adapter cables separately, as required, for BNC & 9D inputs)
<b>Video Signal:</b>	Analog RGB 0.7V p-p via 15D (or via BNC adapter cable 30PH1240) 3-bit / 6-bit TTL RGB > 2.75V p-p (via 9D adapter cable 30PH1224) 4-bit TTL RGB > 2.75Vp-p (via 9D adapter cable 30PH1241)
<b>Signal Sync:</b>	Separate H&V (=/-ve) TTL OR Composite/mixed (-ve) TTL OR Sync-on-green (-ve) 0.3V
<b>Synchronisation Range:</b>	Horizontal scan: 15kHz - 60kHz Vertical scan: 40-100Hz
<b>Power Supply:</b>	90 - 260V AC DC options available
<b>Power Consumption:</b>	30W max
<b>Part Numbers:</b>	
<b>Model Number:</b>	29LW10A71UN/1



- 10" CRT Chassis Monitor dimensions
- Uses 8.4" TFT Panel
- CGA/EGA/VGA/SVGA compatible
- Programmable for Legacy signals
- 90 - 260V AC or 12/24Vdc operation
- Adjustable Tilt Positions 0o / 5o / 10o / 15o
- Optional Remote OSD controls
- Optional Monochrome settings

The 29LW10A71UN/1 series of Industrial LCD monitors has been designed as replacement for 10" CRT monitors. Ease of integration into a wide range of Measurement, Instrumentation and Human-Machine interface applications has been a key consideration. It uses KME's XP5.7 A-D board in an Open-Frame Chassis Base plate fixings and holes have been designed to pick up on the original CRT chassis mounting positions.

The 10A series offers full protection of the TFT panel with toughened safety glass and best EMC performance.

Due to a policy of continuous product development KME reserves the right to change specifications and descriptions without prior notification. All trademarks acknowledged.

KENT MODULAR ELECTRONICS LTD  
621 Maidstone Road  
Rochester, Kent ME1 3QJ  
T: +44 (0)1634 830123 F: +44 (0)1634 830619  
E: sales@kme.co.uk W: www.kme.co.uk

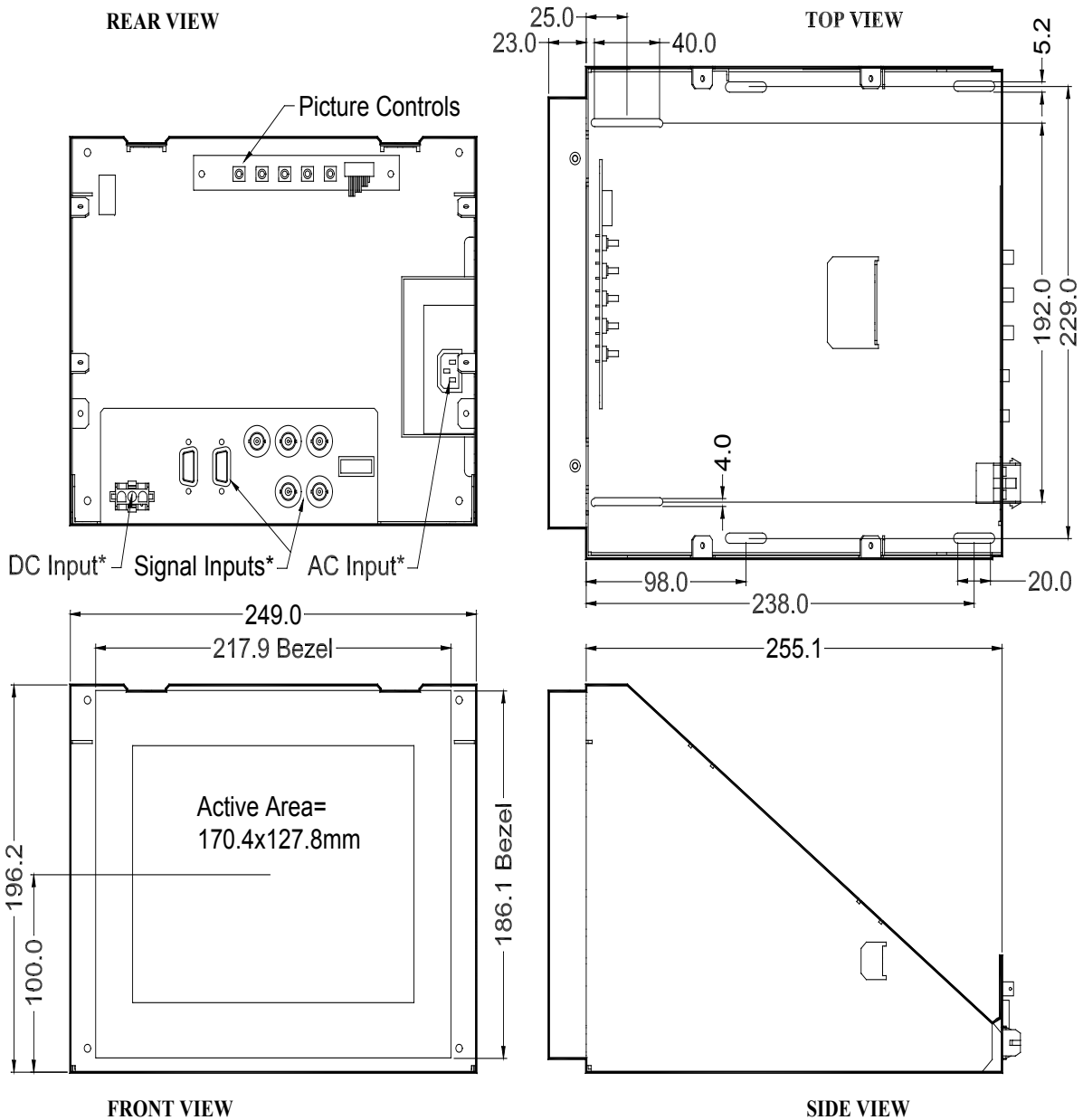


# 8.4" LCD CHASSIS REPLACEMENT

# DATASHEET

## FOR 10" CRT

29LW10A71UN/1



\*Where Fitted

All dimensions in millimetres  
(Not to scale)