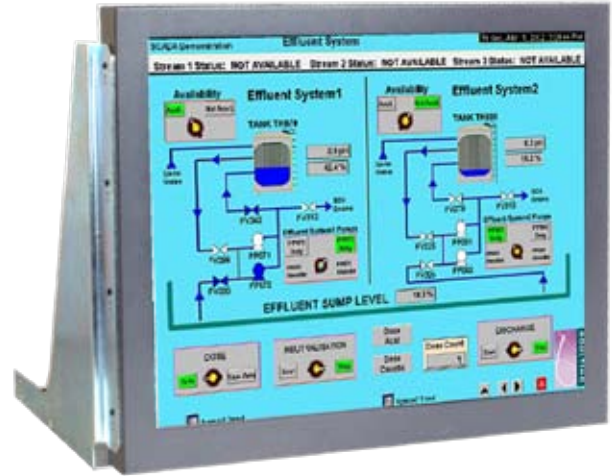


FOR 21" CRT

29LWC21DMA01/1

Electrical Description	
TFT Characteristics:	
Type:	AM colour TFT
No. of colours:	16M
Max resolution:	1280 x 1024 pixels
Active display area:	376 x 301 mm
Brightness:	250cd/m ²
Backlight life:	50,000 hours
Contrast ratio:	1000:1 typical
Viewing angles:	140°H, 140°V
Input connectors:	9D, 15D, BNC x 5
Video Signal:	Analog RGB 0.7-1.0Vp-p Or TTL >2.75Vp-p
Signal Sync:	Separate H&V (+/-ve) TTL or Composite (-ve) TTL or Sync-on-Green (-ve) 0.3V
Synchronisation Range:	Horizontal scan: 15kHz - 60kHz Vertical scan: 40-100Hz
Multiscan Support:	Fast Scan Support: 1280 x 1024 SXGA 1024 x 768 XGA 800 x 600 SVGA 640 x 480 VGA
Power Supply:	90 - 260V AC
Clock rate:	150MHz max
Power Consumption:	50W Max
Physical / Environmental	
Controls: (On Screen Display buttons at rear)	Brightness, Contrast, H/V Position & Size, Frequency, Frequency Fine, Colour
Weight:	9kg approx
Operating Temp:	0 to 50°C
Storage Temp:	-20 to 60°C
Part Numbers:	
Model Number:	29LWC21DMA01/1



- Minimum Width (21" CRT Monitor dimensions)
- CGA/EGA/VGA/SXGA compatible
- Analogue Video inputs via BNC/15HD
- TTL Inputs via 9D- 15D Accessory Cable
- Pre-Programmed for non-standard Legacy signals
- Rear Fixings for CRT Chassis Mounting

The 29LWC21DMA01/1 Industrial LCD monitor has been designed as a replacement for 21" CRT monitors. Ease of integration into a wide range of Measurement, Instrumentation and Human-Machine interface applications has been a key consideration.

KME has designed a rugged LCD monitor module, of minimum width, to match the dimensions of its 21" CRT monitor chassis. The monitor is housed in a rugged metal case with rear fixing points. The LCD module is ventilated for best reliability when mounted within the OEM enclosure. EMC considerations include the use of a metal shield over the front of the LCD panel. Toughened, non-glare safety glass protects the LCD.

The A/D board has been designed to accept a wide range of signal timings from 15kHz up to SXGA standard, including CGA & EGA legacy signals. Set-up controls for fine-tuning of the display are located at the rear of the monitor. Once set, no further adjustments should be required, and the last setting is stored in memory.

Due to a policy of continuous product development KME reserves the right to change specifications and descriptions without prior notification. All trademarks acknowledged.

KENT MODULAR ELECTRONICS LTD
621 Maidstone Road
Rochester, Kent ME1 3QJ
T: +44 (0)1634 830123 F: +44 (0)1634 830619
E: sales@kme.co.uk W: www.kme.co.uk

